

Reliable results at a glance!



Using various fluorescence-based molecular diagnostic techniques we offer a wide range of test systems for microbiological, viral and human genetic parameters.

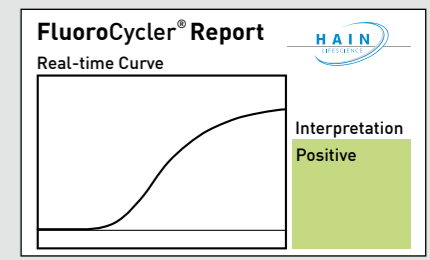
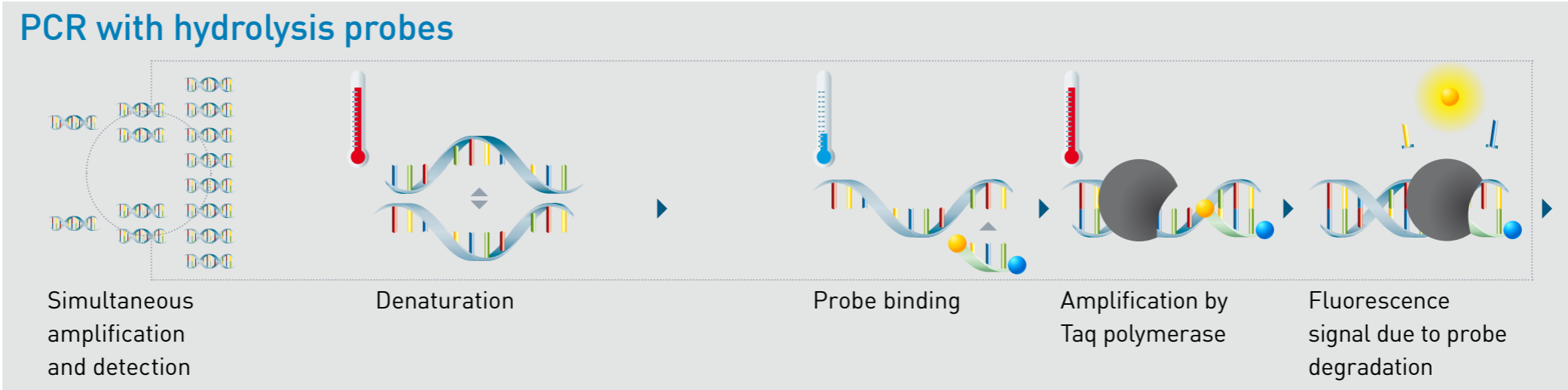
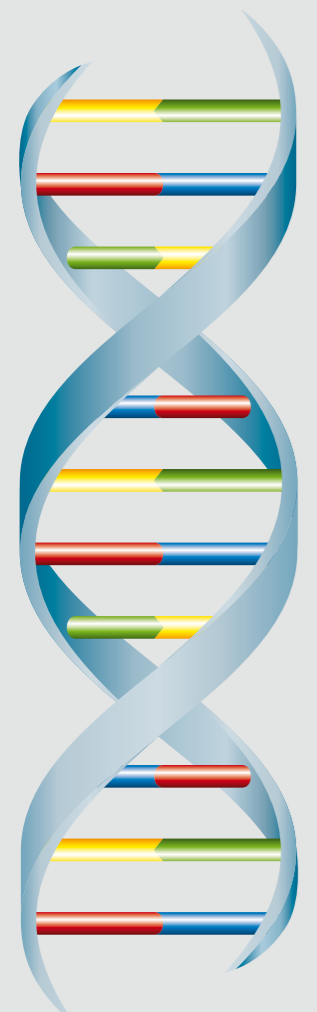
## Your benefits of using the FluoroType® technology

- **Reliable diagnostics from one source:** From nucleic acid extraction to result, we offer all components necessary for your routine laboratory testing.
- **Innovative:** Our fluorescence-based PCR test systems provide fast and reliable results for efficient diagnostics in your laboratory.
- **Maximum automation:** The combination of automated nucleic acid extraction and subsequent amplification with fluorescence-based detection in the **FluoroCycler®** saves valuable hands-on-time.
- **Reliable results at one glance:** The test-specific **Fluoro-Software®** evaluates the results and displays them automatically and clearly.
- **High sensitivity and specificity:** All test systems ensure maximum sensitivity and specificity.
- **User-friendly:** The easy-to-perform technique ensures perfect integration in your daily lab routine.
- **CE marked from isolation to result:** No need for elaborate validation studies.

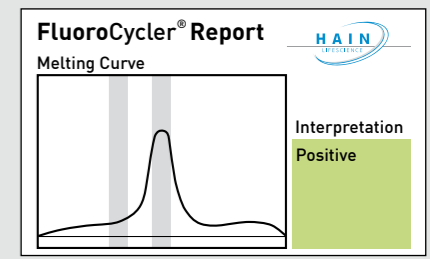
Extracted nucleic acid

Amplification and detection

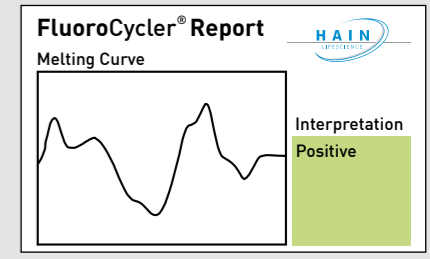
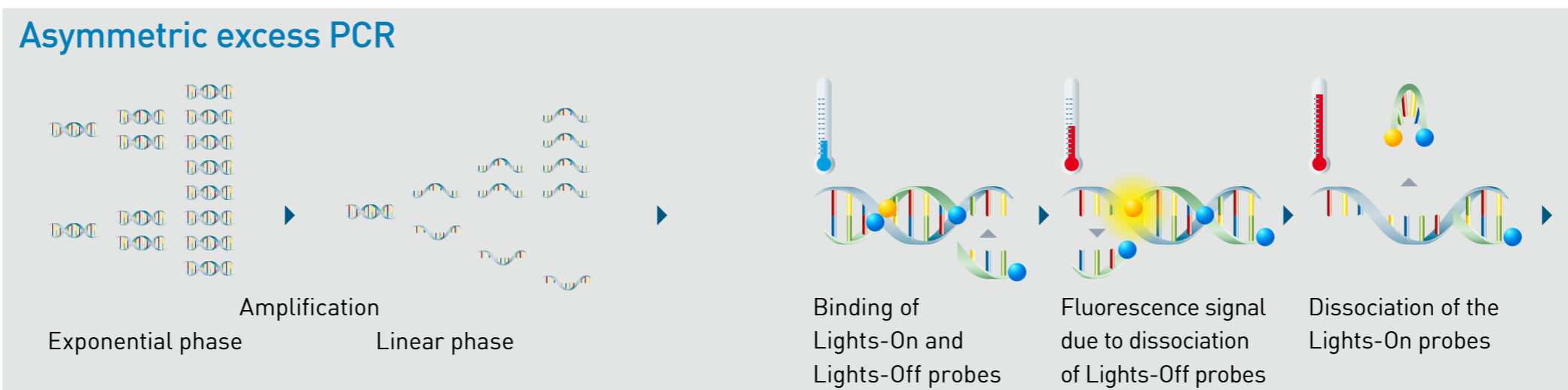
Analysis



Display of results



Display of results



Display of results

# Our portfolio of FluoroType® test systems

## Microbiology

<b>FluoroType® Bordetella</b>	<i>B. pertussis</i> and <i>B. parapertussis</i> from patient samples (swabs: nasopharynx, nose and throat)
<b>FluoroType® Borrelia</b>	<i>B. burgdorferi</i> sensu lato complex from patient samples (EDTA whole blood, CSF, synovial fluid)
<b>FluoroType® CDiff</b>	<i>C. difficile</i> and Toxin B from patient samples (stool)
<b>FluoroType® CT</b>	<i>C. trachomatis</i> from patient samples (cervical swabs, urine, ejaculate)
<b>FluoroType® MRSA</b>	MRSA from patient samples (swabs: nose, throat, skin and wounds)
<b>FluoroType® MTB</b>	<i>M. tuberculosis</i> complex from patient samples (pulmonary and extrapulmonary)
<b>FluoroType® MTBDR</b>	MDR-TB from patient samples (sputum) and culture
<b>FluoroType® NG</b>	<i>N. gonorrhoeae</i> from patient samples (swabs: urethra and cervix, urine)

## Virology

<b>FluoroType® BKV</b>	Detection of BKV from EDTA plasma and urine (quantitative)
<b>FluoroType® CMV*</b>	Detection of CMV from EDTA plasma and urine (quantitative)
<b>FluoroType® EBV</b>	Detection of EBV from EDTA plasma (quantitative)
<b>FluoroType® HSV</b>	Detection and differentiation of HSV-1 and HSV-2 from swabs and CSF (qualitative)
<b>FluoroType® Parvovirus B19</b>	Detection of Parvovirus B19 from EDTA plasma (quantitative)
<b>FluoroType® VZV</b>	Detection of VZV from swabs and CSF (qualitative)

## Human genetics

	(sample material EDTA or citrated whole blood)
<b>FluoroType® Factor V</b>	Detection of Factor V Leiden mutation G1691A
<b>FluoroType® Factor II</b>	Detection of Factor II mutation G20210A
<b>FluoroType® HH C282Y</b>	Detection of HFE C282Y mutation
<b>FluoroType® HH H63D</b>	Detection of HFE H63D mutation
<b>FluoroType® HLA-B27</b>	Detection of HLA-B27 gene
<b>FluoroType® IL28B</b>	Detection of rs12979860 C/T polymorphism in proximity to the IL28B gene
<b>FluoroType® LCT</b>	Detection of -13910 C/T polymorphism in the lactase gene
<b>FluoroType® MTHFR C677T</b>	Detection of 677 C/T polymorphism in the MTHFR gene

\* Coming soon. This product may have become available in the meantime.  
Please contact us for further information. All information in this brochure is correct as of January 2018.

**Hain Lifescience GmbH**

Hardwiesenstrasse 1 | 72147 Nehren | Germany  
Tel.: +49 (0) 74 73- 94 51- 0 | Fax: +49 (0) 74 73- 94 51- 31  
E-Mail: [info@hain-lifescience.de](mailto:info@hain-lifescience.de) | [www.hain-lifescience.de](http://www.hain-lifescience.de)

