

NEW

IDENTIFY, TREAT AND CURE

BAD ORAL HYGIENE CAN AFFECT YOUR BODY AND HEART

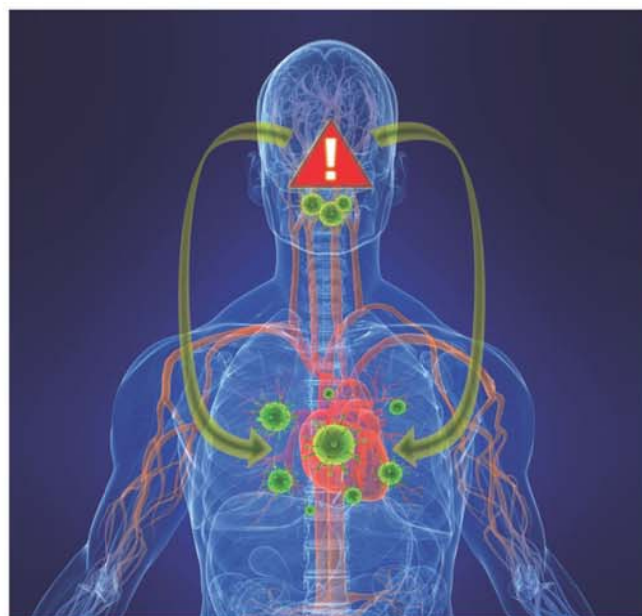
Risk of heart attack increases by 14 times more than twice the risk of a heavy smoker!

Increased risk in premature births!

Increased risk of developing diabetes!



SHOULD BE TESTED!!



Potential Signs of Periodontitis:

- Do your gums bleed when you brush your teeth?
- Are your gums swollen or sensitive?
- Have your gums receded or do your teeth appear longer than before?
- Do you have sensitive or loose teeth?
- Has the position of your teeth changed or have gaps formed?
- Do you have problems with bad breath?
- Do you have family history of losing teeth?

* Covered by most Medical Aids

Office

Tel: 011 315 8623

Fax: 011 314 8644

Consultant: 082 449 9883

Email: marcelle@hain-lifescience.co.za

